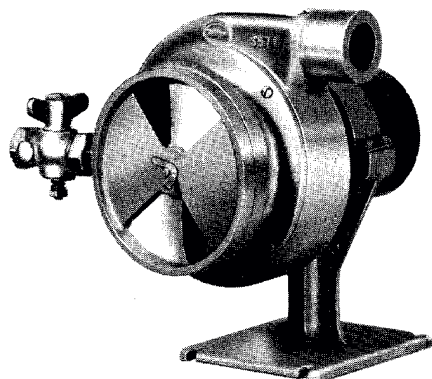


# ECLIPSE MINIMIXERS®



2MM-145-1/8

## DESCRIPTION

Eclipse Minimixers® are miniature fan-type mixers for producing air/gas mixture and delivering it under pressure to a burner or series of burners.

The Minimixers are normally used for small industrial heating applications or for piloting installations where a blast pilot is desired and there is no other source of pressure air available.

Eclipse Minimixers are available in three different models; the 2MM-145-1/8 which has a 1/2" gas inlet and a 1" mixture outlet; the 4MM-2046-1/10 with a 1" gas inlet and a 2" mixture outlet; and the 4MM-2546-1/10 (not pictured) which is the same as the 4MM-2046-1/10 but with a 2-1/2" mixture outlet. They provide an efficient and inexpensive method of firing installations ranging from 145,000 Btu/hr. to 900,000 Btu/hr. (See capacity table below.) Firing can be fixed rate, or automatic on-off control can be provided by installing a solenoid valve (Bulletin M-500) in the gas line feeding the mixer.

Burner nozzles that may be used satisfactorily with the Minimixers include Cumapart® Pilot Tips (Bulletin P-80), Sticktite and Ferrofix Nozles (Bulletin H-22), Blast Tips (Bulletin H-21), Line Burners (Bulletin H-17), Infra-Glo® Burners (Bulletin H-18), or most any other open blast burners within the capacity range of the Minimixers.

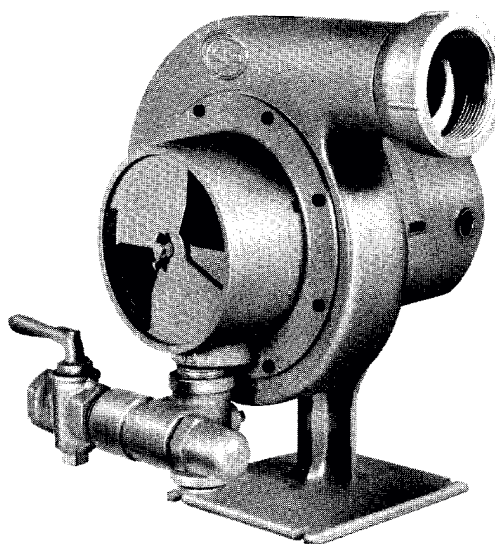
## DESIGN FEATURES

Air input is controlled by an adjustable disc-type shutter that can be easily locked in any desired position by a convenient wing nut. Gas input is accurately regulated with an adjustable orifice incorporated in the inlet gas cock of the 2MM-145-1/8 and by an adjustable limiting gas orifice on the 4MM-2046-1/10 and the 4MM-2546-1/10. Inlet gas pressure of 4" w.c. is adequate to give full rated capacity.

## CONSTRUCTION

Each Minimixer incorporates a small blower constructed of cast aluminum and employing a totally enclosed universal series wound motor.

Minimixers can be mounted in any desired position. The blower/mixer assembly can be rotated on the base to provide any desired mixture outlet position. The gas inlet can be rotated in 90° increments, providing a choice of four different inlet positions.



4MM-2546-1/10

## CAPACITIES—BTU/HR. (Using Nat. Gas 0.6 Sp. Gr.; 8:1 Air/Gas Ratio)

Mixer Catalog Number	Assembly Number	Motor			Maximum Capacity	Mixture Pressure in W.C.	Maximum Total Port Area Sq. In. K = 1.0*	Minimum Capacity
		H.P.	R.P.M.	Type				
2MM-145-1/8	302602	1/8	3300	Enclosed	145,000	1.0	0.87	25,000
4MM-2046-1/10	302612	1/10	3400	Enclosed	550,000	2.8	1.85	150,000
4MM-2546-1/10	302613	1/10	3400	Enclosed	900,000	2.8	3.00	150,000

\*To determine maximum usable port area for a particular type of nozzle, divide port area indicated above by the appropriate coefficient of discharge. The manifold from mixer to burner should be the same size as the mixer outlet, without elbows, and as short as possible. Otherwise, pressure losses will result in lower capacities. If mixture manifold from mixer to burner is over 12" in length, the next larger pipe size should be used.

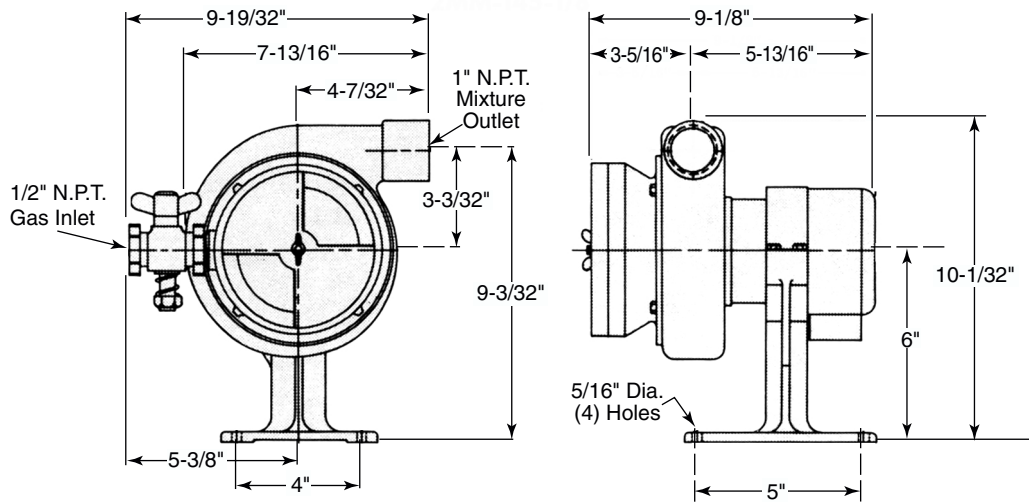
## COEFFICIENT OF DISCHARGE OF ECLIPSE BURNERS

Ferrofix Nozzle	.75	Unitite Nozzle	.80	Multiport Blast Tips	.65
Sticktite Nozzle	.80	100 Series Sticktite	.83	Line Burners	.70

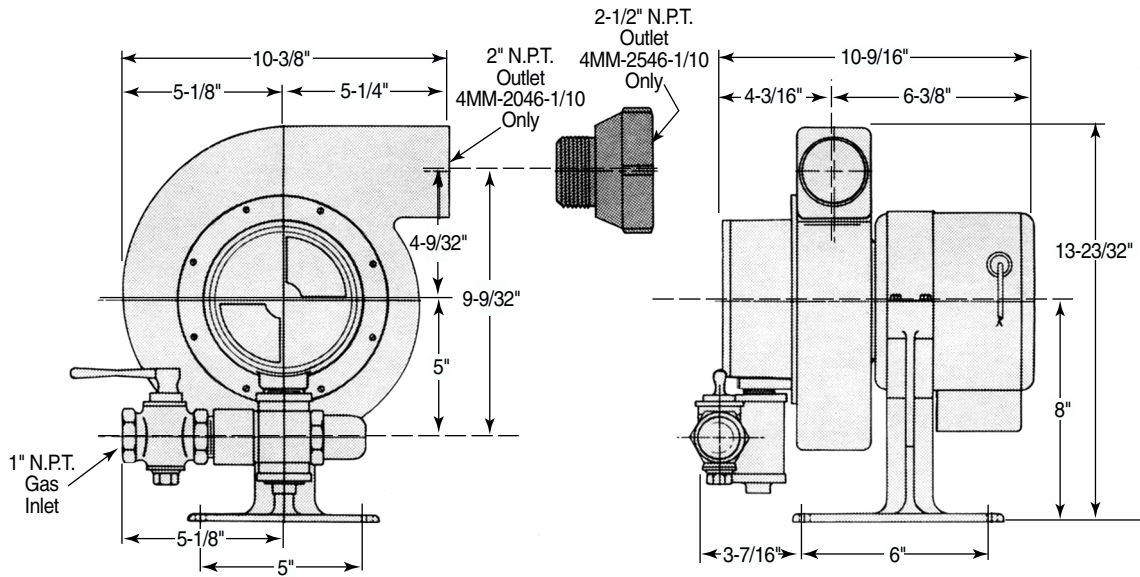


Eclipse Combustion

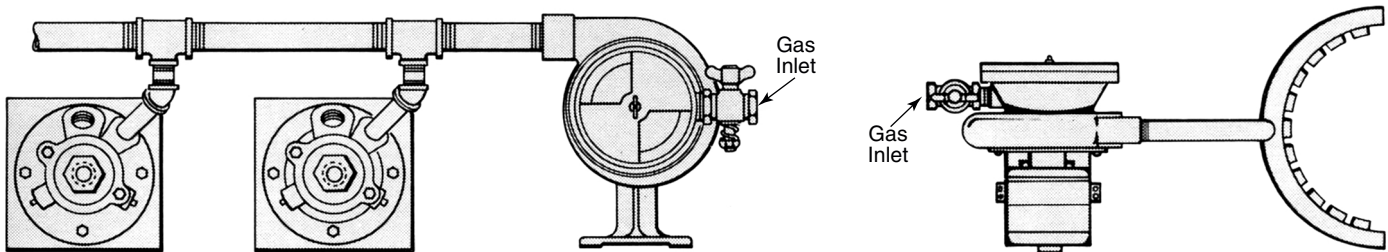
## Dimensions 2MM-145-1/8



## 4MM-2046-1/10 & 4MM-2546-1/10



## Typical Applications



**FIG. 1 - PILOTING** The Minimixer provides an excellent method of supplying air/gas mixture to pilots on those installations where blast pilots are desired and no other source of pressure air is available. Air/gas ratio is easily set by adjustment of Minimixer air shutter and/or adjustable orifice in inlet gas cock.

**FIG. 2 - LOCALIZED HEATING** Eclipse blast tips or nozzles (Bulletins H-14 and H-22) can be mounted in manifolds of practically any desired shape, and with air/gas mixture being supplied by a Minimixer, makes an ideal system for localized heating applications. Minimixer with single nozzle forms an inexpensive torch burner for foundry mold drying and similar uses.



*Eclipse Combustion*



**Offered By:**

Power Equipment Company  
2011 Williamsburg Road  
Richmond, Virginia 23231  
Phone (804) 236-3800  
Fax (804) 236-3882

---

[www.peconet.com](http://www.peconet.com)